

vivid.

Designed to perform  
and built to last.

**EASYMOUNT WIDE FORMAT SYSTEMS**



innovatelaminate® 

RELIABILITY

QUALITY

PERFORMANCE

DESIGN

SPEED

INNOVATION

EASE

SUPPORT



Easymount® laminators are designed to perform and built to last.

Their advanced features allow you to laminate, mount and encapsulate too.

Designed in-house by Vivid, the Easymount® range gives your business extra capacity by allowing you to offer your customers a complete service that you previously had to outsource.

# Easymount gives you the flexibility and versat

## Cost effectiveness

The versatility of Easymount® laminators makes them incredibly cost-effective, meaning you can now truly offer a one-stop shop for print and finishing.

The range includes everything from entry-level models for those still finishing jobs by hand, to professional heavy-duty models that will cope with every application all day everyday.

## Lamination in depth, control in abundance

The range of Easymount® laminators covers every job you need.

As they're designed in-house by our experts, we can make sure that everything about them is aimed at helping you to do that job more efficiently, more cost-effectively and more reliably.





### ◀ Get stuck in

You can apply more than just laminates – the Easymount® range allows you to also lay down application tapes and vinyls, removing the need for squeegeeing by hand.

The feed table also lifts up, making it easier to load rolls of material, increasing effectiveness and minimising hassle.

### ▶ Fingertip control

Our exclusive patented multi-lingual control panel is simple, smooth and easy to use.

Anyone can use it with the minimum of training, and it allows you to take complete control.

Whatever you need, you can achieve with absolute accuracy quickly and easily.



ility you need.



### ▶ Easymount by name, Easymount by nature

Designed for simple, high quality results in a matter of minutes with the minimum of fuss and training.

It's also extremely efficient – our patented pressure gauge handle, for instance, ensures that you choose the correct setting every time quickly and easily.

Anyone can quickly operate an Easymount®.

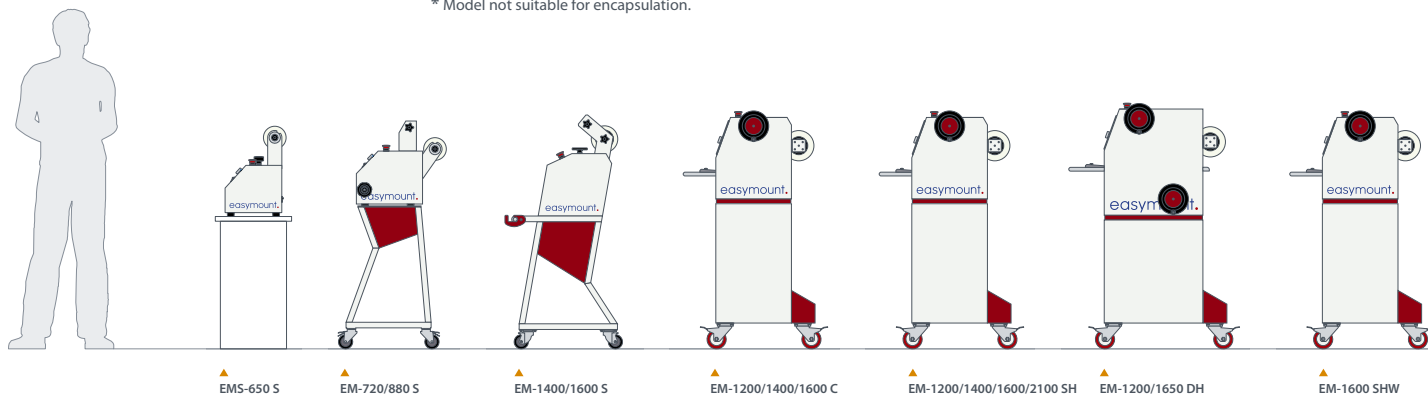


### ▶ Covering every angle

When you are preparing a longer run, the optional take-up unit enables you to work with reel-to-reel lamination, saving time and making it more efficient, too.

“ My Easymount has transformed my business. It allows me to finish print runs when I’m ready, without having to call on a specialist finisher. ”

- large diameter rollers
- solid heavy duty construction
- magic eye safety feature



## Series quick selector

Model suffix - Eg. EM-1600 DH

Code	Maximum Film Width	Sign	Cold	Single Hot	Double Hot
EMS-650	650mm	S	-	-	-
EM-720	720mm	S	-	-	-
EM-880	880mm	S	-	-	-
EM-1200	1200mm	-	C	SH	DH
EM-1400	1400mm	S	C	SH	-
EM-1600	1600mm	S	C	SH	SHW*
EM-1650	1650mm	-	-	-	DH
EM-2100	2100mm	-	-	SH	-

\* Model not suitable for encapsulation.

## Specifications

	Sign 650	Sign 720/880	Sign 1400/1600	Cold 1200/1400/1600	Single Hot 1200/1400/1600/2100	Double Hot 1200/1650	Double Hot 1600
Laminating Speed (m/min)	2	2	4	6	6	3.9	6
Max Width (mm)	650	720/880	1400/1600	1200/1400/1600	1200/1400/1600/2100	1200/1650	1600
Mounting Thickness (mm)	15	15/15	20	25	25	25	25
Roller Diameter (mm)	65	70	131	112/112/131	110/120/130/130	110/130	130
Warm-up Time (mins)	-	-	-	-	10	10	10
Hot Roller Heater System	-	-	-	-	Internal Infrared	Int. Infrared	Int. Infrared
Laminating Temperature Range (°C)	-	-	-	-	0-60	0-130	0-130
Control Panel	LED	LED	LED	Digital	Digital	Digital	Digital
Pressure Adjustment	Manual	Manual	Manual	Manual/Gauge	Manual/Gauge	Man./Gauge	Man./Gauge
Film Core (mm)	75	75	75	75	75	75	75
Power Supply AC (V)	220/240	220/240	220/240	220/240	220/240	220/240	220/240
Power Supply Required (Amps)	13	13	13	13	13	32	32
Power Consumption (W)	50	50	65	50	970/1310/1500	3950/5150	5000
Overall Dimensions - Width (mm)	850	940/1100	1555/1755	1790/1990/2190	1790/1990/2190/2650	1700/2170	1990
Overall Dimensions - Depth x Height (mm)	300x470	650x1250	575x1200	650x1255	650x1255	785x1255	650x1255
Gross Machine Weight (Kg)	45	65/75	105/110	165/175/200	165/175/200/260	270/365	205
Warranty	1 year	1 year	1 year	1 year	1 year	1 year	1 year

“ Having our own laminator on-site is so much more cost-effective than outsourcing. ”

## Accessories

	Sign	Cold	Single Hot	Double Hot
Additional Mandrels	-	•	•	•
Take-up Unit	-	•	•	•
Dust Cover	-	S	S	S

• Yes - No S Standard



FRESH CONTROL

EFFECTIVENESS



Catering for every taste ▶

The Easymount® range allows you to laminate a whole range of jobs you previously had to outsource. So you can laminate shop signs, exhibition stands, roll-up banners and vehicle wraps – you can even mount on Foamex board up to 25mm thickness – in-house with ease.



lity you need to get the job completed.

“It’s true that Vivid provide excellent machines, but their supplies are also second to none. Whatever you need, they’ll get it to you.”

Prolife pressure sensitive films

Film Finishes

Roll Diameter	Roll Length	Mount	Gloss	Crystal Matt	Semi-Matt (lustre)	Sandtex
650mm	50m	•	•	•	•	•
880mm	50m	•	•	•	•	S
880mm	100m	S	S	•	S	•
1040mm	100m	•	•	•	•	•
1300mm	100m	•	•	•	•	•
1520mm	100m	•	•	•	•	•

• Yes - No S Special order Non-exhaustive list. Consult us for full stock and availability.

- Prolife® premium brand pressure sensitive range
- various finishes available:
  - Gloss
  - Crystal Matt
  - Semi-Matt (lustre)
  - Sandtex
- 3" core
- 100m rolls

A cut above the rest ▶

Why waste film when we can provide you with custom rolls? Our film supplies can be tailored – literally – to suit your specific needs with the ability to log cut bespoke roll widths to your specifications.





MATRIX SINGLE SIDED SYSTEMS



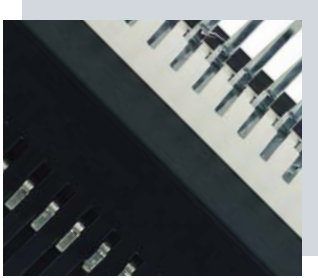
EASYMOUNT WIDE FORMAT SYSTEMS



LINEA ENCAPSULATION SYSTEMS



PEAK POUCH LAMINATING SYSTEMS



MAGNUM BINDING SYSTEMS



PROLIFE FILM SUPPLIES

Vivid design and manufacture a wide range of laminating systems, specialising in function, style and reliability.

For years, we have been leading the field with our innovative product development, successfully building our brands and customer relationships that help us to introduce unique products in the marketplace.

So if you're looking to improve your finishing, start by calling us.

---

**Vivid Laminating Technologies Ltd**

St Georges House, Whitwick Road, Coalville, Leicestershire LE67 3FA England

**0845 1 30 40 50** [sales@vivid-online.com](mailto:sales@vivid-online.com)

**vivid-online.com**

Vivid care about the environment and is an ISO 14001 registered company.